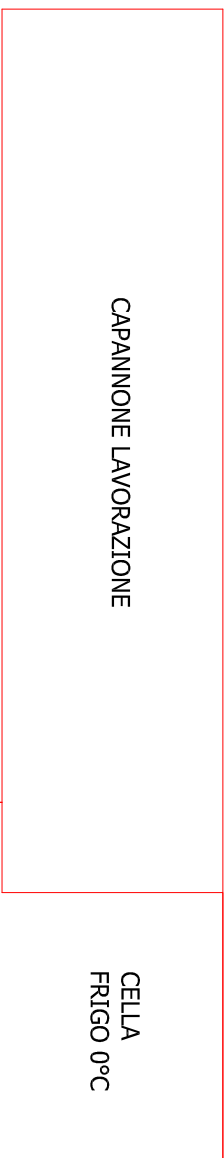


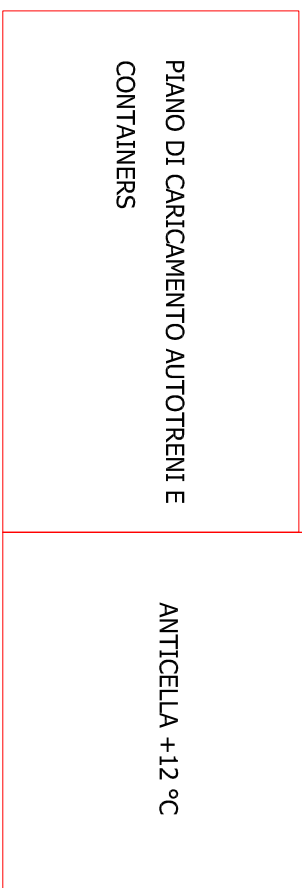
**PIANTA OPIFICIO INDUSTRIALE**

Riferimenti catastali: F.8 P. 4206 4207

Ubicazione: Strada vicinale "S.Tommaso"



hmedia= 7,25m



AREA TOTALE CAPANNONE: 1440 mq  
 SUP. NETTA CALPESTABILE: 1100 mq  
 AREA SCOPERTA: 5278 mq  
 SUP.IMP.FV: 675 mq

Strada vicinale "S.Tommaso"

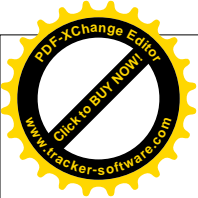
PARCHEGGIO AUTOMEZZI

Cabina Enel

F.8 Pila 3613

ORIENTAMENTO



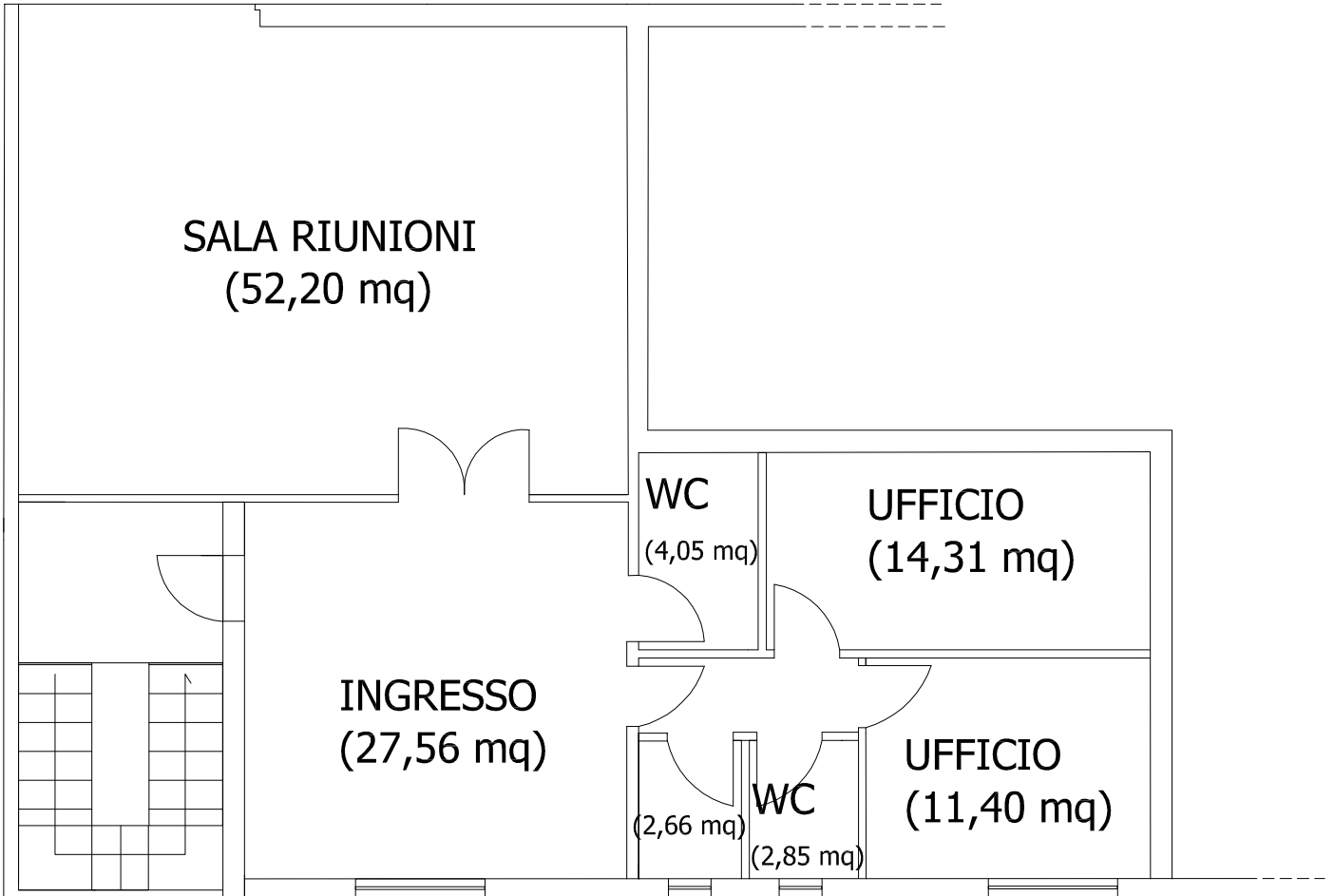


# PIANTA UFFICI - I PIANO

Riferimenti catastali: F.8 P. 4206

Ubicazione: Strada vicinale "S.Tommaso"

Sup. netta interna = mq 127



ORIENTAMENTO



SCALA 1:100